

The background is a detailed illustration of a Swiss mountain landscape. In the foreground on the right, a large, multi-story wooden chalet with a dark roof and balconies overflowing with red flowers is partially visible. The middle ground shows a cluster of smaller houses with dark roofs and light-colored walls, nestled in a green valley. In the background, a massive, rugged mountain with patches of green and grey rock rises against a blue sky with soft, white clouds. The overall style is that of a high-quality digital illustration or a stylized photograph.

"Oberstdorf Starter Map"

Viewpoints • Lakes • Cafés • Rainy-Day Backup



Your Adventure Awaits

"The mountains are calling, and I must go."

- *John Muir*

Armed with this starter guide, you're ready to experience the magic that makes Oberstdorf one of Germany's most beloved Alpine destinations. Whether you're standing atop Höfatsblick watching eagles soar through pristine mountain air, photographing the emerald waters of Christlessee, or discovering the thunderous beauty of Breitachklamm gorge, each moment promises to be extraordinary. Remember, the best adventures happen when you're prepared but remain open to unexpected discoveries. Trust your instincts, embrace the mountain weather, and let Oberstdorf's natural beauty guide your perfect day. Safe travels, and welcome to the Alps!

How to Navigate This Guide

1

Check the Weather

Choose Morning A for clear skies or Morning B for cloudy conditions. Weather determines your mountain access and view quality.

2

Select Your Cards

Pick 2-3 activities from our starter cards: combine a lake visit, café stop, and easy walk for the perfect balance.

3

Weather Backup

If conditions change unexpectedly, pivot to Breitachklamm—our all-weather gorge experience that's spectacular in any condition.

Morning Options by Weather

Option A: Sunny Morning

When the forecast predicts **sunny weather**, you can fully enjoy majestic views and access to the highest peaks.

- Choose a scenic mountain climb to admire breathtaking panoramas.
- Walk along high-altitude trails, ideal for photography and deep relaxation.
- Use cable cars to reach viewpoints effortlessly.

Option B: Cloudy Morning

In case of **cloudy weather**, views may be limited, and access to the highest parts of the mountains may be difficult, but there is still much to discover.

- Explore charming valley walks and forest paths that offer peace and contact with nature.
- Visit local villages and museums to learn about the region's culture and history.
- Enjoy the tranquility of the lower mountain areas, where fog adds mystery to the landscape.

Suggestions for Additional Activities

Regardless of the weather, you can always supplement your day with relaxing activities. Combine a lake visit, a break at a charming cafe, and an easy walk to create a perfect balance. Always keep 2-3 activities from our starter cards handy!

Emergency Weather Backup Plan

If weather conditions change unexpectedly, pivot to **Breitachklamm Gorge** – our all-weather gorge experience that is spectacular in any conditions, rain or shine.

Viewpoints – Your Sky-High Options

Höfatsblick (Nebelhorn)

The fastest route to "wow" panoramas. This short loop delivers sweeping Alpine views that'll have you reaching for your camera within minutes of stepping off the cable car.

Fellhorn Gipfelstation

An easy ridge walk with expansive views in every direction. Perfect for those wanting wide-open vistas without technical hiking challenges.

Söllereck

The family-friendly option that stays below the cloud line. Reliable visibility and gentle terrain make this ideal for first-time Alpine visitors.





Lakes & Easy Loops

Christlessee

Emerald waters surrounded by towering peaks create a picture-perfect Alpine scene. The 15-30 minute loop is gentle enough for all fitness levels, yet delivers that quintessential mountain lake experience.

Best for: Quick photo opportunities and peaceful reflection time.

Freibergsee

Features a charming boardwalk and footbridge that's incredibly photo-friendly. The lake's position offers stunning mountain reflections, especially during morning hours when the water is still.

Best for: Leisurely strolls and postcard-worthy shots.

Valley Walks – Flat & Scenic Routes

Trettachtal Valley

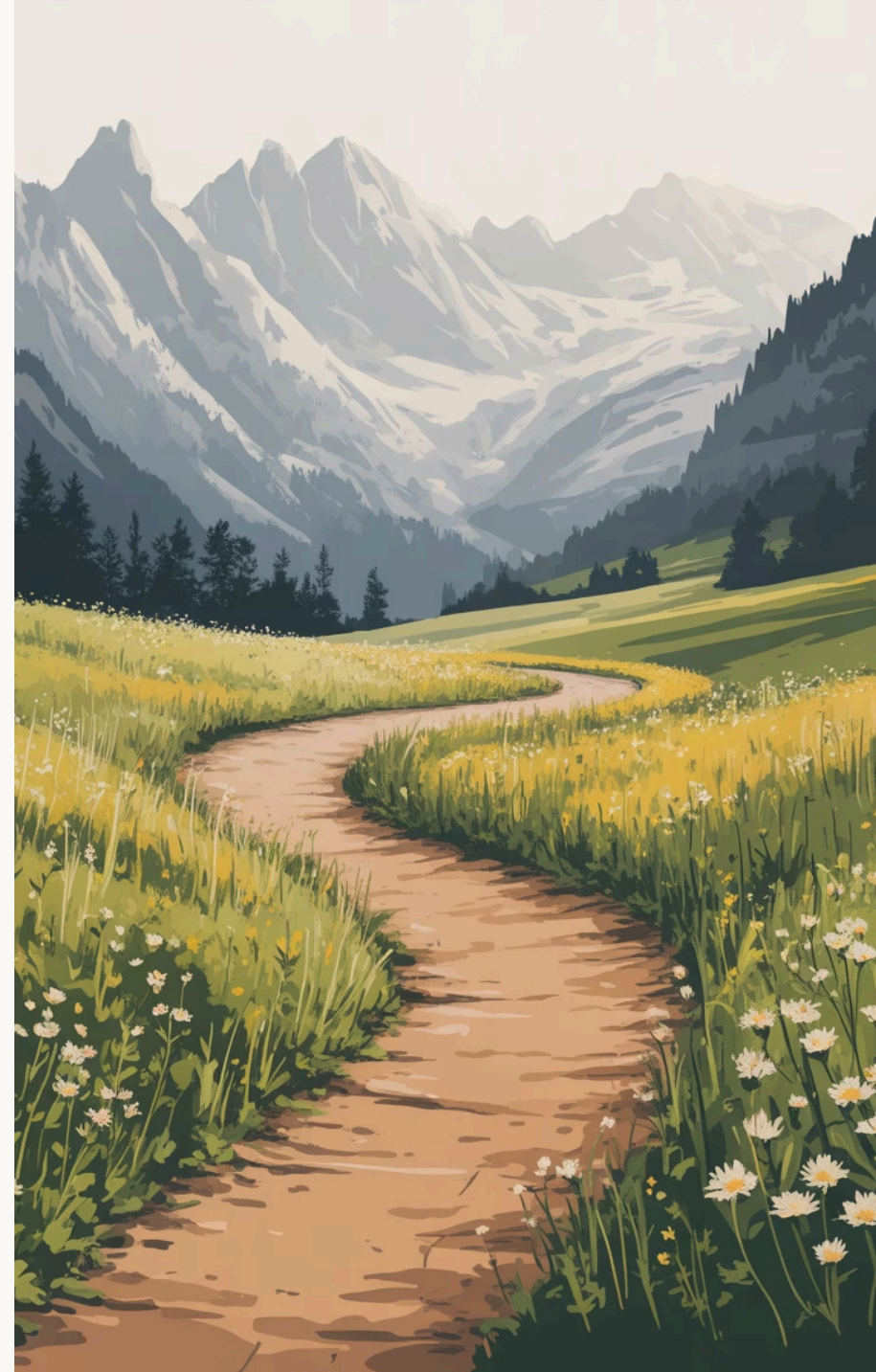
Spectacular Trettachspitze views accompany you on this gentle valley floor walk. Multiple cafés en route provide perfect rest stops with local treats and refreshing drinks.

Perfect for: Photography enthusiasts and café hoppers seeking mountain views without elevation gain.

Stillachtal to Birgsau

Peaceful meadows and flowing river create a tranquil walking experience. This quieter route offers solitude and pristine Alpine scenery away from crowds.

Perfect for: Those seeking serenity and authentic Alpine countryside atmosphere.



Your Perfect Day Timeline

09:00 – Mountain Ascent

Take the Nebelhornbahn up to Höfatsblick for your morning "wow" moment with panoramic Alpine views.

12:30 – Terrace Lunch

Enjoy traditional Alpine cuisine at Gasthof Freibergsee's terrace overlooking the pristine lake waters.

18:30 – Village Dinner

Return to Oberstdorf centre for dinner along the charming promenade with local specialities.

11:30 – Lake Transfer

Descend and transfer to Freibergsee for a serene lakeside interlude with crystal-clear mountain reflections.

15:00 – Valley Exploration

Choose between Trettachtal's scenic valley walk or Breitachklamm gorge if weather turns.

Weather Backup Plan

“

Breitachklamm Gorge

When weather turns unpredictable, this dramatic gorge becomes your ace card. Rain actually enhances the experience—waterfalls cascade more powerfully, and the mist creates an otherworldly atmosphere.

The well-maintained walkways and protective overhangs mean you'll stay comfortable while witnessing nature's raw power up close. It's genuinely spectacular in any conditions.

”

Transportation & Food Essentials

Lift Stations

- [Nebelhornbahn](#) - Town center, main viewpoint access
- [Fellhornbahn](#) - Southern route, ridge walks
- [Söllereckbahn](#) - Western access, family-friendly

Essential Food Stops

- **Café at Christlessee** - Cakes with lake views
- **Gasthof Freibergsee** - Lakeside terrace dining
- **Oberstdorf Center** - Promenade cafes and gelato





Packing & Safety Essentials



Layer System

Windbreaker and light fleece are essential. Alpine weather changes rapidly, and proper layering keeps you comfortable at any altitude or condition.



Proper Footwear

Shoes with good tread are non-negotiable. Boardwalks and gorge paths can become slippery, especially in wet conditions.



Hydration & Energy

Carry 1-1.5 litres of water plus snacks. Mountain air and walking increase hydration needs significantly.



Safety Priorities

Check summit visibility, watch lift closing times, and always leave no trace. Cash is essential as many mountain huts don't accept cards.



Ready for More Adventures?



Ready-to-Follow Day Plan

Want a complete itinerary with precise timing and routes? Download our "1 Day in Oberstdorf - Greatest Hits" PDF guide (1.6 MB) for turn-by-turn directions.



Extended 3-Day Experience

Ready to explore Oberstdorf properly? Get our comprehensive 3-Day Guide with hourly routes and weather alternatives, free via our newsletter subscription.

Whether you're here for a single perfect day or planning an extended Alpine adventure, Oberstdorf offers experiences that will stay with you long after you've returned home. Start with these essentials, then let the mountains call you back for more.